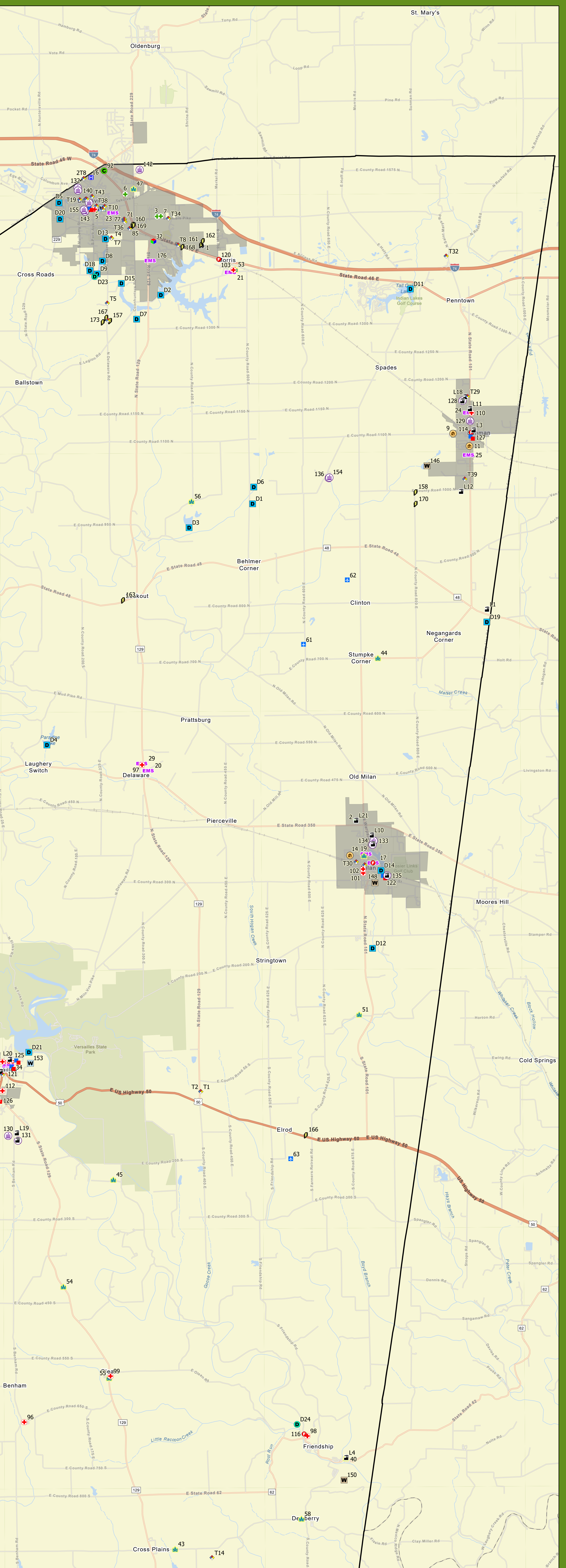


Map ID	Facility Name
1	BATESVILLE
2	RIPLEY CROSSING
3	CHATEAU OF BATESVILLE
4	SILVER MEMORIES HEALTH CARE
5	ASSISTED LIVING AT BATTERBER FLATS
6	WATERS OF BATESVILLE, THE
7	ST ANDREWS HEALTH CAMPUS
8	MANDERLEY HEALTH CARE CENTER
9	WESTVIEW MHP
10	CASEMOUTH VILLAGES MOBILE HOME
11	NOT AVAILABLE
12	FAIRVIEW VILLAGE
13	KINGS MOBILE HOME PARK
14	MILAN TERRACE MOBILE HOME PARK
15	WILMONT GROVE
16	MARGARET MARY HEALTH
17	MILAN RESCUE 30
18	OTTER CREEK TOWNSHIP HOLTON VOLUNTEER FIRE DEPARTMENT
19	WESTVILLE MHP
20	REPLBY COUNTY EMERGENCY MEDICAL SERVICES
21	MORRIS VOLUNTEER FIRE DEPARTMENT
22	SOUTHERN RIPLEY COUNTY EMERGENCY LIFE SQUAD RESCUE 69
23	TRI-COUNTY AMBULANCE
24	SUNSHAN RURAL FIRE DEPARTMENT INCORPORATED
25	SUNSHAN AREA LIFE SQUAD INCORPORATED
26	VERSAILLES VOLUNTEER FIRE DEPARTMENT
27	OSGOOD VOLUNTEER FIRE DEPARTMENT
28	NAPOLEON VOLUNTEER FIRE COMPANY
29	DEL AWARE COMMUNITY VOLUNTEER FIRE DEPARTMENT INCORPORATED
30	BATESVILLE VOLUNTEER FIRE AND RESCUE DEPARTMENT AND EMERGENCY MEDICAL SERVICES 19
31	RIPLEY COUNTY Courthouse
32	SOUTHEASTERN INDIANA YMCA LEARNING CENTER
33	JACKSON STREET KIDS ACADEMY DAYCARE & PRESCHOOL
34	AMERICAN BROTHERHOOD CHRISTIAN CHURCH
35	BATESVILLE VINEYARD COMMUNITY CHURCH
36	VOICE OF THE NAZARENE (HOLTON TRINITY TABERNACLE)
37	BATESVILLE AREA MINISTERIAL ASSOCIATION INC.
38	ST JOHNS EVANGELICAL LUTHERAN CHURCH
39	CROSSROADS COMMUNITY WESLEYAN CHURCH
40	BEAR CREEK BAPTIST CHURCH
41	TANGLEWOOD BAPTIST CHURCH
42	OSGOOD 1ST BAPTIST CHURCH
43	CROSS PLAINS BAPTIST CHURCH
44	ST PAUL LUTHERAN CHURCH
45	CHRISTIAN INTERNATIONAL FAMILY WORSHIP CENTER INC.
46	ST PAUL CROSSROADS LUTHERAN CHURCH
47	CHURCH ON THE ROCK ASSEMBLY OF GOD
48	MILAN WESLEYAN CHURCH
49	UNION PLAT ROCK BAPTIST CHURCH
50	RODNEY WESLEYAN CHURCH
51	CAVEHILL INDEPENDENT CHURCH OF GOD INC.
52	SOLID ROCK BIBLE FELLOWSHIP INC.
53	HIS HANDS EXTENDED MINISTRIES AND OUTREACH FOUNDATION INC.
54	CROSS PLAINS UNITED METHODIST CHURCH
55	ST PAULS LUTHERAN CHURCH
56	ADAMS EVANGELICAL LUTHERAN CHURCH
57	DABNEY BAPTIST CHURCH
58	SAINT PAUL LUTHERAN CHURCH
59	NEW MARION BAPTIST CHURCH
60	FRANCIS
61	LEWIS ARFIELD
62	BULL
63	LITZINGER
64	RIPLEY COUNTY EMERGENCY MANAGEMENT
65	BATESVILLE MFG. INC. -HAGEMAN PLANT
66	BATESVILLE MFG. INC. -HAGEMAN PLANT
67	BATESVILLE MFG. INC. -HAGEMAN PLANT
68	BATESVILLE MFG. INC. -HAGEMAN PLANT
69	BATESVILLE MFG. INC. -HAGEMAN PLANT
70	BATESVILLE MFG. INC. -HAGEMAN PLANT
71	BATESVILLE MFG. INC. -DOLL PLANT
72	BATESVILLE MFG. INC. -DOLL PLANT
73	BATESVILLE MFG. INC. -DOLL PLANT
74	BATESVILLE MFG. INC. -DOLL PLANT
75	BATESVILLE MFG. INC. -DOLL PLANT
76	BATESVILLE MFG. INC. -DOLL PLANT
77	BATESVILLE MFG. INC. -DOLL PLANT
78	BATESVILLE MFG. INC. -DOLL PLANT
79	BATESVILLE MFG. INC. -DOLL PLANT
80	BATESVILLE MFG. INC. -DOLL PLANT
81	BATESVILLE MFG. INC. -DOLL PLANT
82	BATESVILLE MFG. INC. -DOLL PLANT
83	BATESVILLE MFG. INC. -DOLL PLANT
84	BATESVILLE MFG. INC. -DOLL PLANT
85	HILL ROM INC. RITTER PLANT
86	HILL ROM INC. PLATING PLANT
87	HILL ROM INC. PLATING PLANT
88	WRB
89	WRB
90	WXGJ
91	WXGJ
92	WZHM
93	WZHM
94	Batesville Methodist Church
95	Batesville City Hall
96	Betham United Methodist Church
97	Delaware United Methodist Church
98	Friendship First Dept
99	Ocean St. Paul Lutheran Church
100	Holton Christian Church
101	United Methodist Church
102	Agua Prima Church
103	St. Anthony School Basement
104	St. Peter's Church
105	Shelby Christian Church
106	Osgood United Methodist Church
107	Osgood Christian Church
108	Osgood First Baptist Church
109	St. John's Catholic Church
110	Sunanman Town Hall
111	Versailles Tyson Church
112	Versailles Church of Christ
113	Batesville First Dept
114	Sunanman Fire Dept
115	Holton Fire Dept
116	Friendship Fire Dept
117	Main Fire Dept
118	NAPOLEON VOLUNTEER FIRE DEPT
119	OSGOOD VOLUNTEER FIRE DEPT
120	MORRIS VOLUNTEER FIRE DEPT
121	Versailles Police Dept
122	Milan Town Police Dept
123	Batesville Police Dept
124	Osgood Police Dept
125	RIPLEY COUNTY Sheriff's Dept
126	Indiana State Police Dept
127	Sunanman Police Dept
128	Sunanman Elementary School
129	RIPLEY Ohio Dearborn Center
130	South RIPLEY Elementary School
131	South RIPLEY J.E. Sr High Sch
132	Batesville Middle School
133	Milan High School
134	Milan Middle School
135	Sunnam Elementary School
136	Sunnam Middle School
137	Jac-Con-Del High School
138	Jac-Con-Del Elementary
139	Southeastern Career Center
140	BATESVILLE INTERMEDIATE SCHOOL
141	CROSS PLAINS CHRISTIAN SCHOOL
142	SOUTHEASTERN IN FIRST STEPS
143	SAINT LOUIS SCHOOL
144	IVY TECH STATE COLLEGE
145	VERSAILLES MUNICIPAL WWTP SITE
146	SUNSHAN WASTEWATER TR. PLANT
147	OSGOOD WWTP
148	MILAN WWTP
149	NAPOLEON MUNICIPAL STP
150	FRIENDSHIP REGIONAL SEWER DIST
151	HOLTON MUNICIPAL WORTH
152	BATESVILLE WATER & GAS UTILITY
153	VERSAILLES PUBLIC WATER SUPPLY
154	ST NICHOLAS CATHOLIC SCHOOL
155	ST LOUIS SCHOOL
156	LAKI MHP
157	UNKNOWN124895
158	UNKNOWN124896
159	UNKNOWN124902
160	UNKNOWN124903
161	UNKNOWN124904
162	UNKNOWN124905
163	UNKNOWN124906
164	UNKNOWN125511
165	UNKNOWN125512
166	UNKNOWN125514
167	TAP137552
168	TAP137553
169	TAP137554
170	TAP137556
171	TAP137563
172	TAP137564
173	BATESVILLE
174	TAP174247
175	UNKNOWN124898
176	BATESVILLE URGENT CARE

Map ID	Facility Name
177	Amesport
178	API America, Inc.
179	Batesville
180	Batesville - USDP244
181	Batesville 35 KY Substation
182	Batesville Hillenbrand Substation
183	Batesville Hillenbrand Substation
184	Batesville Logistics Incorporated
185	Batesville Manufacturing Incorporated Assembly
186	Batesville Manufacturing Incorporated Stamping
187	Batesville North Substation
188	Batesville Water & Gas Utility
189	Best Meal Fooding, Inc.
190	Cross Plains Microwave Station
191	Davey Ohara Contractor Incorporated - Plant 2
192	Empiregas
193	Empiregas
194	Empiregas
195	Frontier Communications-Batesville - 945-30726-79418
196	Frontier Communications-Versailles - 945-30794-82429
197	Hickory Agri Enterprises
198	Hickory Agri Enterprises
199	Hickory Agri Enterprises
200	Indiana State Police
201	Jac-Con-Del Elementary School
202	Jac-Con-Del Jr/Sr High School
203	Knappa-Madison Greenhouses
204	Laudick Trucking Inc.
205	Manderley Health Care Ctr
206	Mc Donald's
207	Milan Elementary School
208	Milan Middle School
209	Napoleon Hardware
210	Oceanair Group
211	Ohio Road Products Div
212	RIPLEY County Jail
213	RIPLEY Crossing
214	South RIPLEY High School
215	Southeastern Indiana REMC
216	Sunanman Elementary School
217	United Parcel Inc.
218	Hill-Rom, Inc. (Plant Plant)
219	Hill-Rom, Inc. (Plant Plant)
220	Laughery Valley - Osgood
221	Laughery Valley Ag - Versailles
222	Laughery Valley Bulk Plant
223	Lytton Milan Bulk Plant
224	Margaret Mary Health
225	McPersson
226	Milan Substation
227	Osgood Substation
228	Penntown
229	Reville LP Bulk Plant
230	Ricca Chemical Company LLC
231	Southeastern Indiana REMC
232	Straber Oil Company Incorporated
233	Straber Oil Company Incorporated
234	Straber Oil Company Incorporated
235	Sunanman Elementary School
236	United Parcel Service Versailles
237	Versailles
238	Versailles
239	Versailles
240	Wood-Mizer LLC

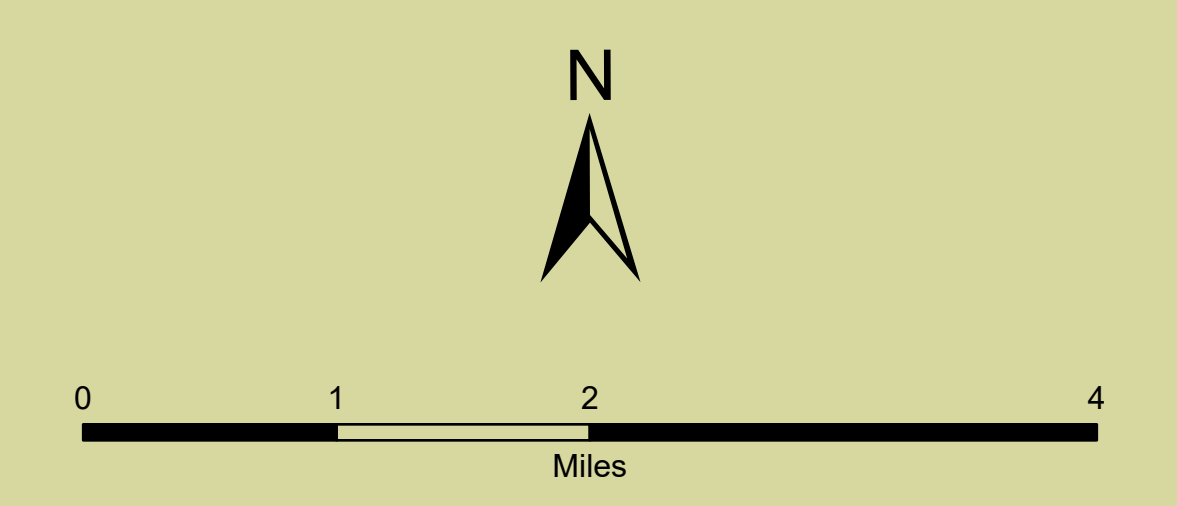
Map ID	Facility Name
11	Boyer Trucking
12	Blue Flame LP Gas
13	Enhanced Telecommunications
14	Freemship Pka Market
15	Hazen Paper Co.
16	Hickory Agri Enterprises
17	Indiana State Police
18	Jac-Con-Del Elementary School
19	Jac-Con-Del Jr/Sr High School
20	Knappa-Madison Greenhouses
21	Laudick Trucking Inc.
22	Manderley Health Care Ctr
23	Mc Donald's
24	Milan Elementary School
25	Milan Middle School
26	Napoleon Hardware
27	Oceanair Group
28	Ohio Road Products Div
29	RIPLEY County Jail
30	RIPLEY Crossing
31	South RIPLEY High School
32	Southeastern Indiana REMC
33	Sunanman Elementary School
34	United Parcel Inc.

Map ID	Dam Name
131	AMMERSMAN LAKE DAM
132	BISCHOFF RESERVOIR DAM
133	BROUGHTON LAKE DAM
134	CORNETS PARADISE LAKE
135	CROSSVILLE LAKE DAM
136	DALE GUNTER DAM
137	EUGENE GUNTER LAKE DAM
138	FELLER RESERVOIR DAM
139	HAIN RESERVOIR DAM
140	HARDWOOD LAKE DAM
141	INDIAN LAKES PRESERV DAM
142	LAKI BEINE DAM
143	LIBERTY PARK RESERVOIR DAM
144	MILAN LAKE DAM
145	MOLLENGAMER RESERVOIR DAM
146	NEEL LAKE DAM
147	OLD TIMBERS LAKE
148	OSER RESERVOIR DAM
149	ROBINSON SWALES DAM
150	TIMBER RESERVOIR DAM
151	VERSAILLES LAKE DAM
152	WOOD LAKE DAM



Sources of Data:
1. Federal Emergency Management Agency
2. National Hydrography Dataset
3. National Climatic Data Center
4. United States Geological Survey
5. Indiana Department of Homeland Security
6. Indiana Department of Natural Resources
7. Indiana Department of Environmental Management
8. Indiana Office of Technology
9. Ripley County Emergency Management Agency
10. Large Employers: <http://www.hoosierdata.in.gov/buslookup/BusLookup.aspx>

Airport
 EMS
 Hospital
 Power Plant
 Large Employer
 Place of Worship
 EOC
 Law Enforcement
 Storm Shelter
 Waste Water Plant
 Low Head Dams
 Communications
 Education
 Mobile Home Park
 Dams
 Courthouse
 Fire Station
 Nursing Home
 Water Plant
 Daycare
 HazMat
 Petroleum
 Tier II Facility



 Christopher B. Burke Engineering LLC PNC Center, Suite 1368 South 115 West Washington Street Indianapolis, Indiana 46204 (317) 266-8000 www.cbef-in.com	PROJECT: Multi-Hazard Mitigation Plan Ripley County, Indiana	PROJECT NO: 23-0116 APPROX. SCALE: 1" = 4,000' DATE: 01/2025 EXHIBIT: 1
	TITLE: Essential Facilities	